

A Walk in the Wild: Continuing John Muir's Journey

August 6, 2011 – January 22, 2012

www.museumca.org

The Story of California. The Story of You.
Oakland Museum of California



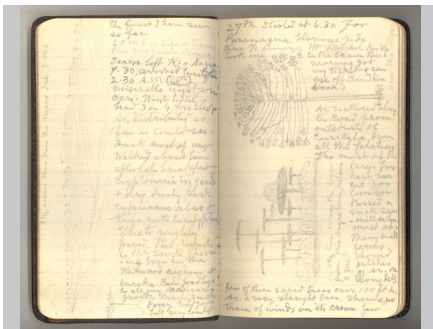
Stephen Joseph. Herbarium Print. Meadow Rue, *Thalictrum anemonoides*. Ranunculaceae. Hab. Indiana. Collected by John Muir. c. 1866.



Stephen Joseph. Herbarium Print. Northern Primrose, *Primula borealis*. Primulaceae. Hab. Point Hope, Alaska. Collection attributed to John Muir, Cruise of the Corwin 1881.



Stephen Joseph. Herbarium Print. California Polypod, *Polypodium californicum*. Polypodiaceae. Hab. Sierra Nevada, California. Collected by John Muir. 1875



Journal. *Trip to South America, 1911*. John Muir Papers, Holt-Anderson Special Collections, University of the Pacific Library. ©1984, Muir-Hanna Trust.



Journal. *Yosemite Journal, 1872*. John Muir Papers, Holt-Anderson Special Collections, University of the Pacific Library. ©1984, Muir-Hanna Trust.



John Muir. Detail, Archival Photograph. John Muir Papers, Holt-Anderson Special Collections, University of the Pacific Library. ©1984, Muir-Hanna Trust.



Stephen Joseph. Detail, Half Dome, Yosemite National Park. 2009. Photograph.



Thomas Hill. *Muir Glacier, Alaska*. Oakland Museum of California, Gift of Mr. and Mrs. Richard R. Hanna.



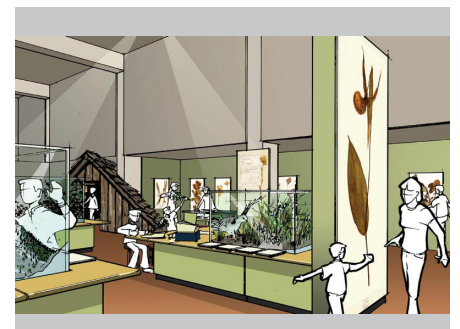
William Keith. *Mount Ritter (Crown of the Sierras)*. Oakland Museum of California, Gift of the Keith Art Association.



A Walk in the Wild: Continuing John Muir's Journey exhibition design. 2011. Oakland Museum of California.



A Walk in the Wild: Continuing John Muir's Journey exhibition design. 2011. Oakland Museum of California.



A Walk in the Wild: Continuing John Muir's Journey exhibition design. 2011. Oakland Museum of California.